

# Streetlighting GALAXXIS 145L

**hansen**

## Technical data

|                             |                       |
|-----------------------------|-----------------------|
| Mains input:                | 176-250V              |
| Power consumption:          | 45W                   |
| 30 x high power 1,3W diodes |                       |
| Output:                     | 400mA                 |
| Luminous flux (by 5000K)    | 2850lm                |
| Colour temperature:         | 3000K, 4000K or 5000K |
| Dimensions LxWxH:           | 800 x 240 x 135mm     |
| Weight:                     | 6,5kg                 |

|           |                         |
|-----------|-------------------------|
| Lamppost: | Bottomfitting Ø 60-76mm |
|           | Sidefitting Ø 42-60mm   |

## General information

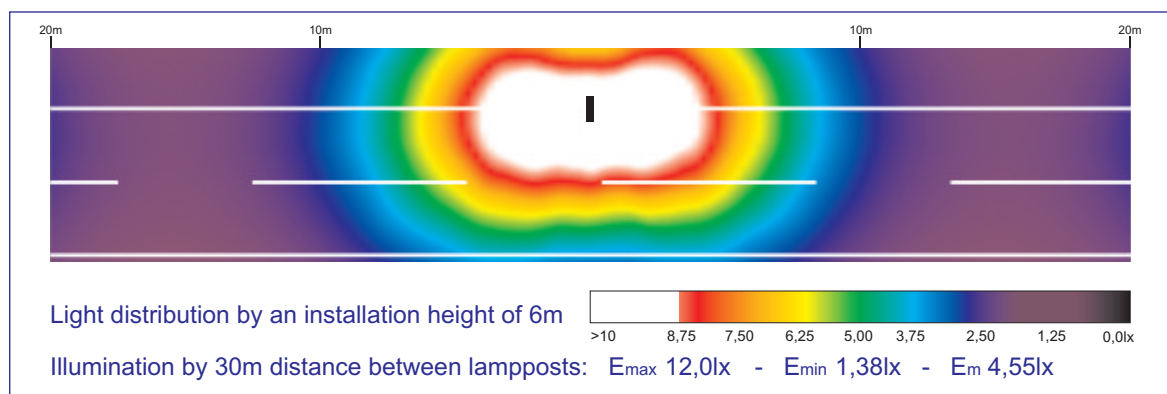
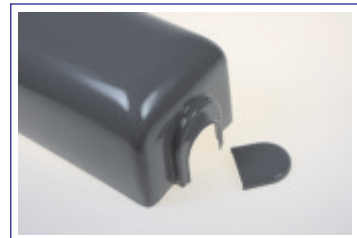
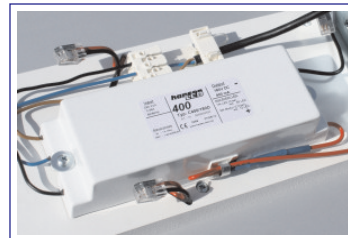
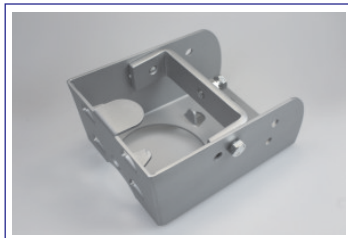
Through the specially designed and placed LED modules a uniform light distribution is ensured over a wide area (along the direction of traffic). Each LED module consists of 5 diodes encapsled in an EV1 anodized aluminium block in accordance with IP63.

The base plate consists of EV1 anodized aluminium as well and also serves as a heat distributor, away from the diodes.

A mains connector with strain relief is built into the wiring of the incorporated converter. The 180V/400mA converter is IP65 rated and protection class II. Dimming to 200mA is possible either permanently or depending on the hours of the day.

The integrated, galvanized lamppost fitting offers a variety of adjustment options depending on the on-site installation conditions and the dimensions of the lamppost.

The top housing is manufactured from dark grey PVC and can be removed during installation and maintenance.



Additional light technical data is available for download under EULUMDAT on our website [www.galaxxis-streetlighting.com](http://www.galaxxis-streetlighting.com)

Technical modifications reserved. Date: Jul. 2010 Data content protected by copyright.